



**OCTOBER 20, 2021, CITY COUNCIL
SPECIAL MEETING
REDISTRICTING PROCESS**

The City Council of the City of Clinton, North Carolina, met in a special meeting at 6:00 PM on October 20, 2021, in the City Hall Auditorium. Present were Mayor Lew Starling, Councilmembers Strickland, Ruggles, and Mayor Pro Tem Becton.

Councilmember Bryant attended the meeting virtually. Councilmember DuBose was unavailable.

Also present in the City Hall Auditorium were City Manager Tom Hart; City Clerk Elaine Hunt; Assistant Chief Adrian Mathews; and Planning Director Mary Rose.

City Attorney Tim Howard was also present.

Also present were Ms. Deborah R. Stagner, Tharrington Smith, LLP and Mr. Blake Esselstyn, Mapfigure Consulting.

Sylvia Chestnutt of the Sampson Weekly and Emily Williams of the Sampson Independent were absent.

Mayor Starling called the special city council meeting continued from October 5, 2021, to order.

Mayor Starling asked Mayor Pro Tem Becton to give the invocation.

Mayor Starling asked City Manager Hart to begin with the next item on the agenda, "Presentation – Redistricting." Before doing so, City Manager Hart briefly brought up another matter. He stated that insurance cost has increased in the Rural Fire District as a result of interior bureaucratic actions and not because of the Clinton Fire Department. Furthermore, City Manager Hart stated that the Fire Marshall will perform inspections in

January for the annual ratings. He wanted to make Mayor and City Council aware of this matter.

PRESENTATION -- REDISTRICTING

Mr. Blake Esselstyn appeared before City Council. He stated that we get a census every ten (10) years, due to population changes. He stated that districts should be balanced and the key unit for redistricting is the census block. Mr. Esselstyn explained the process for obtaining ideal district population. He stated that one takes the population for the specific year and divide by 5, which is the number of districts for the City of Clinton. For example, 2020 population is 8,383; therefore, divide this number by 5 and the result is 1677. Mr. Esselstyn reviewed with the group Option A and Option B. (SEE ATTACHED).

Regarding Option A, Mr. Esselstyn stated that District 1 needs to absorb population from District 2. Also, he stated that Sunset Avenue will become a part of District 5, as well as a few blocks in Royal Lane and Oakland Boulevard.

Regarding Option B, Mr. Esselstyn stated that a number of smaller areas was adjusted. He stated that District 5 gets a little from District 1 and one block changed from the downtown area. Mr. Esselstyn informed the group that in Option A, two areas changed and in Option B, six areas changed.

Councilmember Strickland questioned why District 4 and District 5 changed so differently in Options A and B.

Ms. Stagner reviewed the redistricting timeline. She stated that City Council has until November 17th to complete the process and a public hearing is required. Also, Ms. Stagner stated that a resolution will need to be adopted reflecting the changes and she would create this resolution.

Mayor Pro Tem Becton asked if the decision would be between Option A and Option B. Ms. Stagner stated that if the group is not satisfied with the two options, Mr. Esselstyn can come back with a third option if a third option is possible. However, Ms. Stagner stated that the Board of Elections will need to be notified by November 12, 2021, if the City can't meet the November 17th deadline.

Mayor Starling asked if Ms. Stagner and Mr. Esselstyn can provide the City with three options—Option A, Option B, and an Option C. Ms. Stagner stated that their agreement with the City states three (3) options. Mr. Esselstyn stated that, "We can allow for a third plan. However, if the numbers don't work, the numbers don't work."

Councilmember Strickland stated that between Options A and B, he prefers Option B—he wants to keep things simple.


Planning Director Rose mentioned a potential subdivision in the future and again, Councilmember Strickland stated, “Option B.”

Councilmember Bryant questioned changes within the districts. He questioned District 1 being moved over a couple of blocks; however, Mr. Esselstyn stated that, pieces of blocks can not be done. Furthermore, Mr. Esselstyn stated, “District 1 can’t be carved up.”

Upon a motion made by Councilmember Ruggles, seconded by Mayor Pro Tem Becton, it passed unanimously to instruct Ms. Stagner and Mr. Esselstyn to bring back to City Council Option A, Option B, and an Option C.

Being no further business, a motion was made by Councilmember Ruggles, seconded by Mayor Pro Tem Becton and it passed unanimously to adjourn the special October 20, 2021, City Council meeting. The next regular city council meeting will be held on November 2, 2021.

Time adjourned: 7:15 PM.



Elaine F. Hunt, City Clerk, MMC, NCCMC



Lew Starling, Jr., Mayor

Presentation of draft plans

City of Clinton

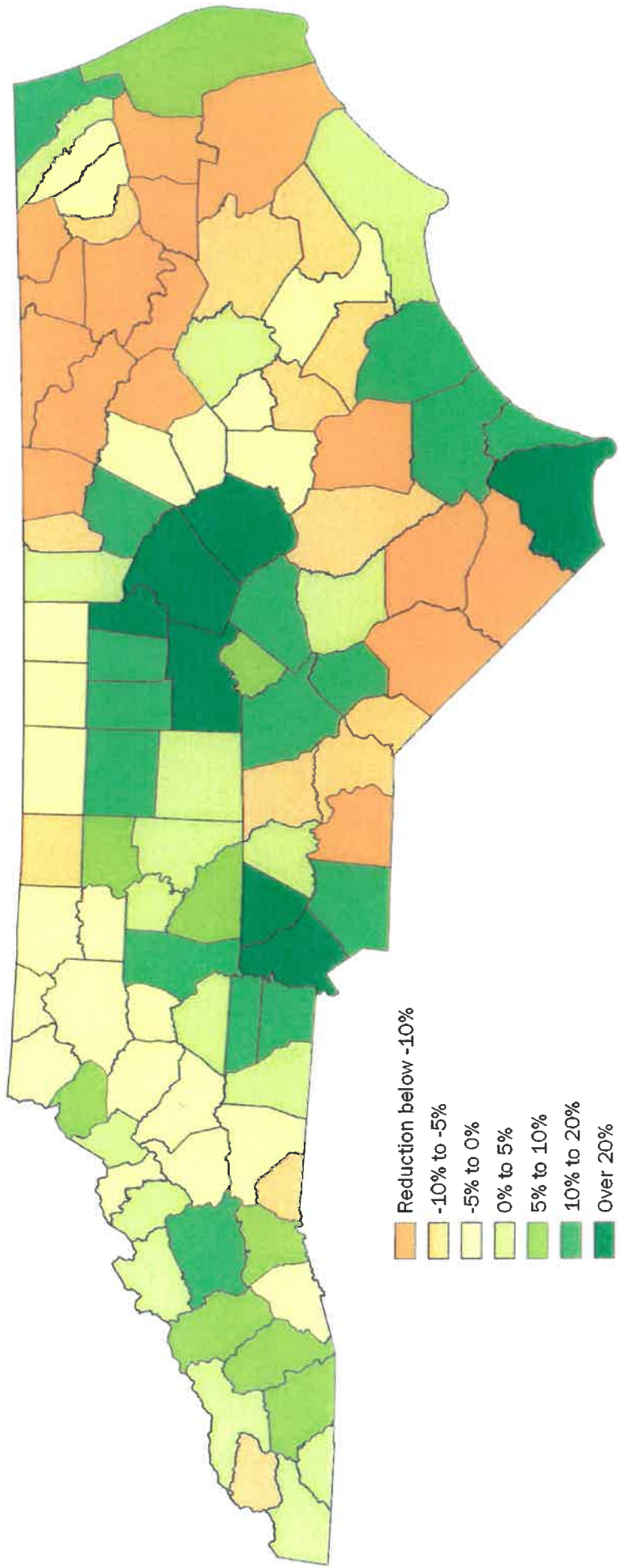
October 20, 2021

Local Redistricting Service

Deborah Stagner, Tharrington Smith

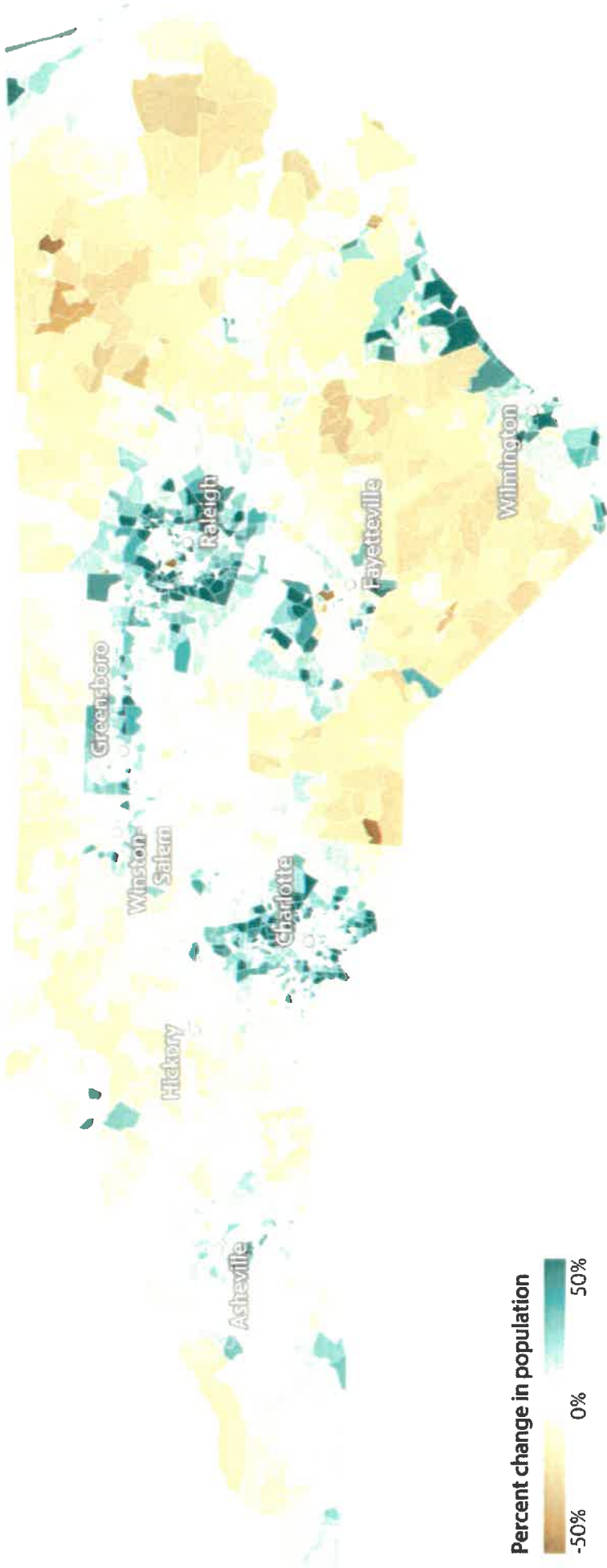
Blake Esselstyn, Mapfigure Consulting

Change in NC County Population from 2010 to 2020



NC POPULATION CHANGE SINCE 2010 BY TRACT

Data released by the U.S. Census Bureau Thursday gives us the most detailed picture yet of population and demographic changes since the last decennial census count in 2010 — even down to the neighborhood level.

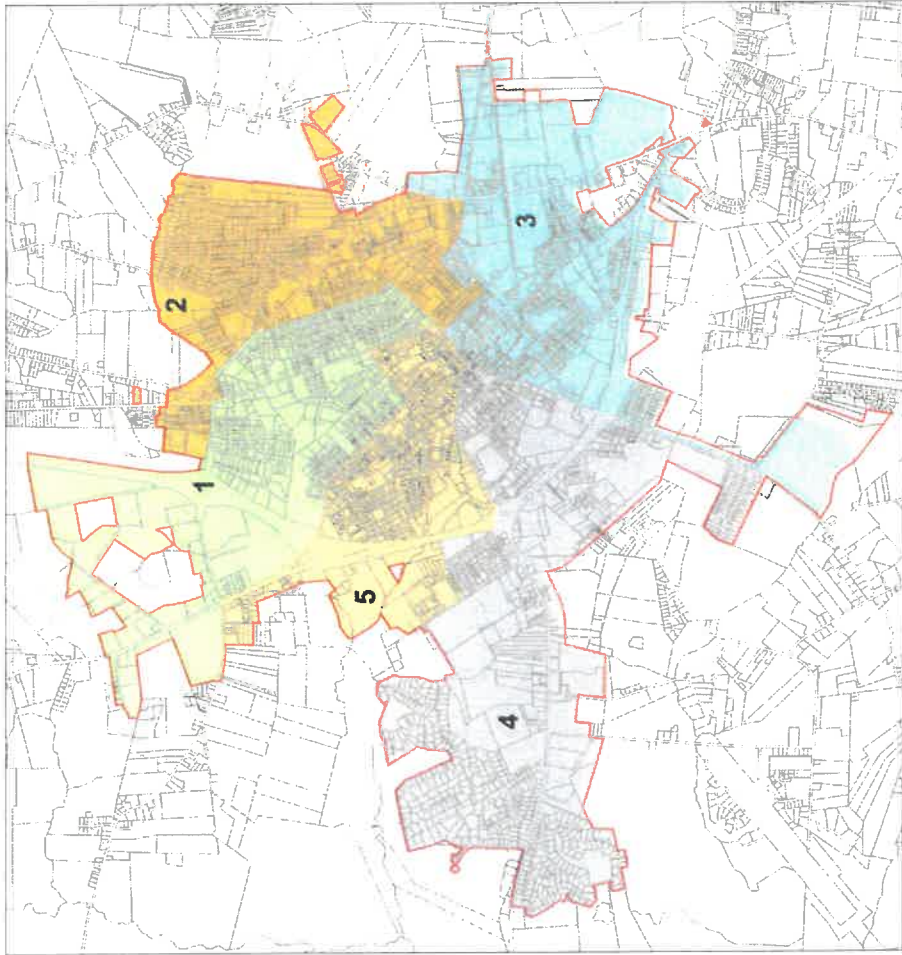


NOTE: 2010 population figures used here are adjusted for the changes in tract shape from 2010 to 2020, so some population totals may appear as fractions to indicate the uncertainty in the estimates. Tracts with zero population in 2010 are excluded from this data.

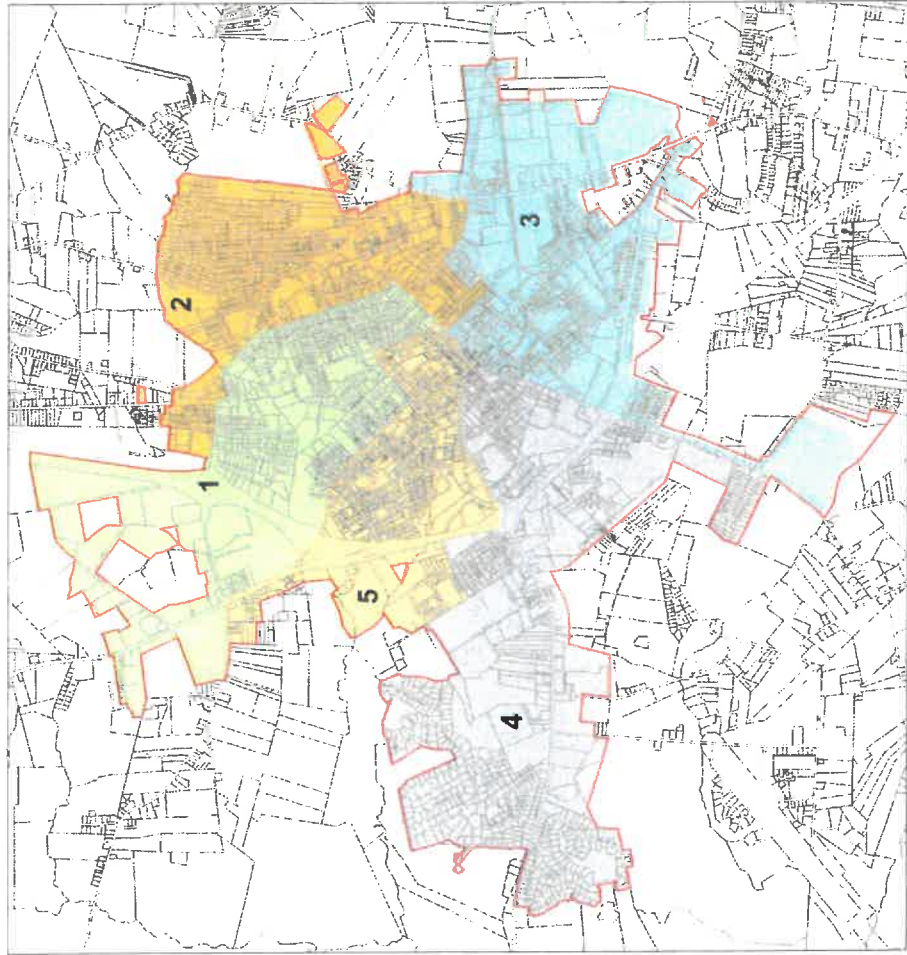
Map: Tyler Dukes, The News & Observer • Source: U.S. Census Bureau

Source: <https://twitter.com/mtdukes/status/1425892751183339525>

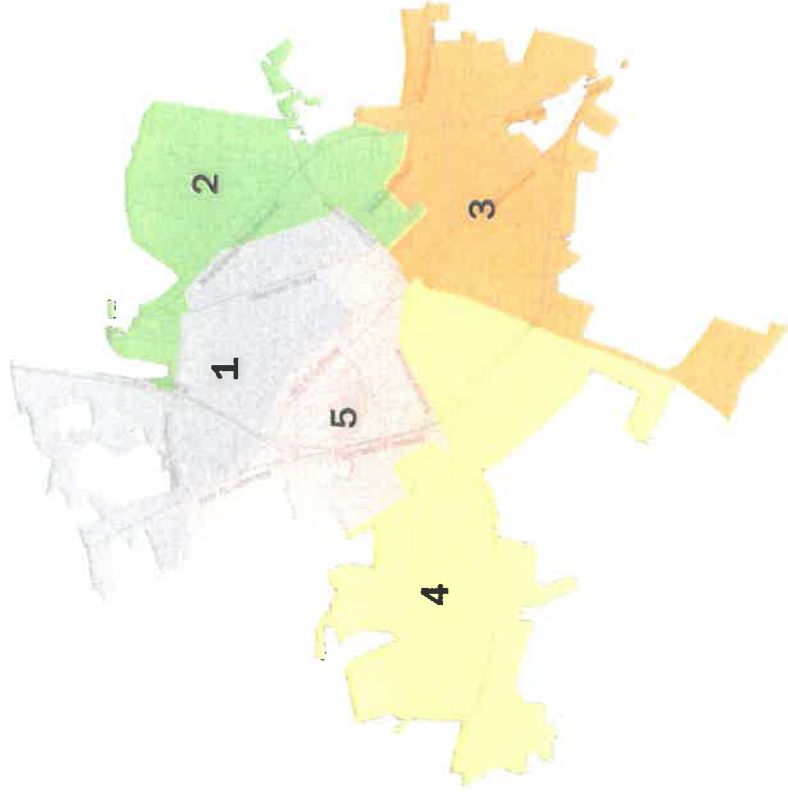
From 2009



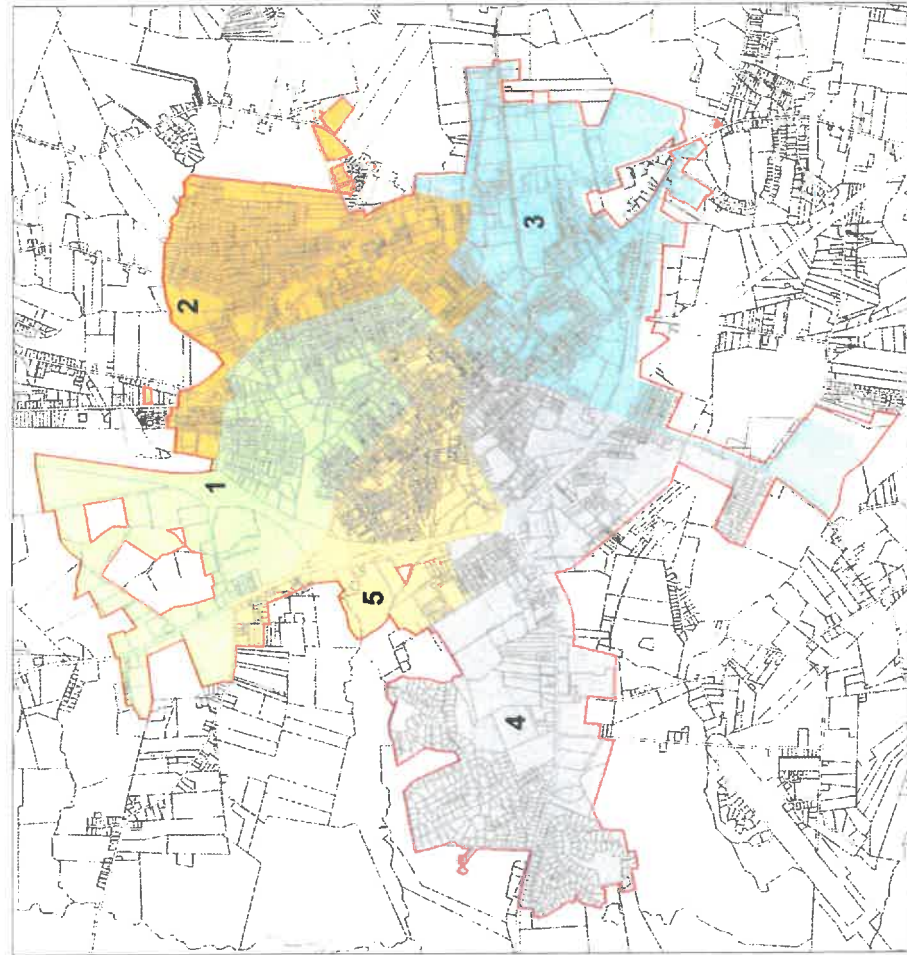
From 2009



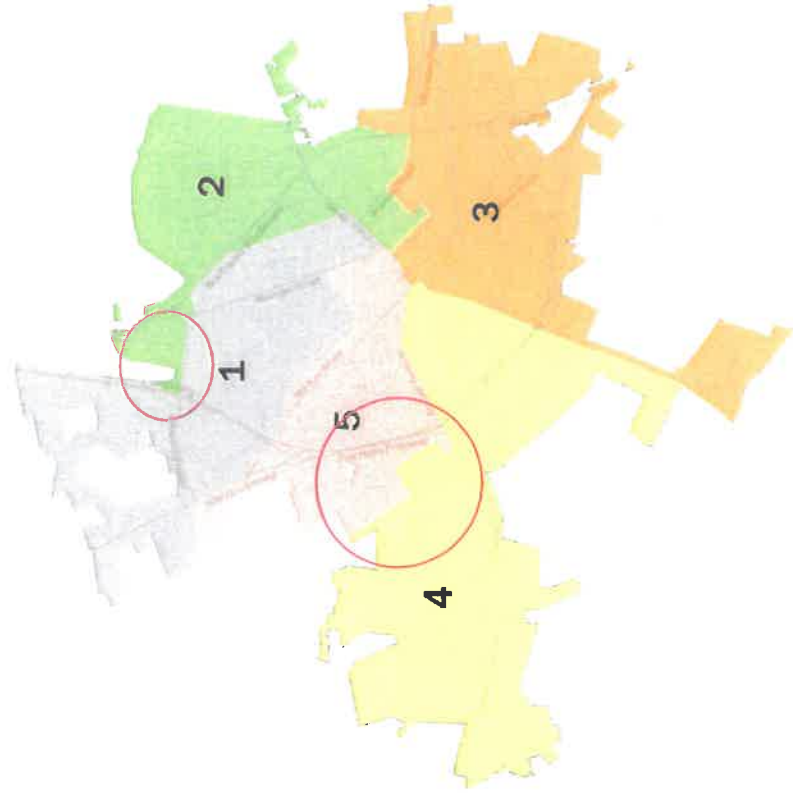
2020 Census Geography



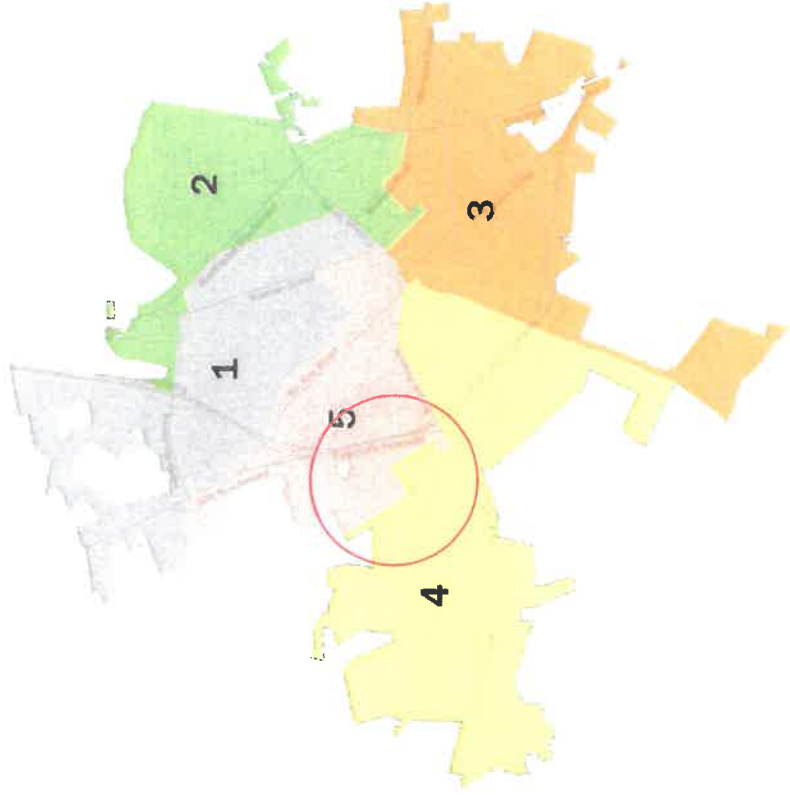
2020 Census Geography



From 2009



2020 Census Geography



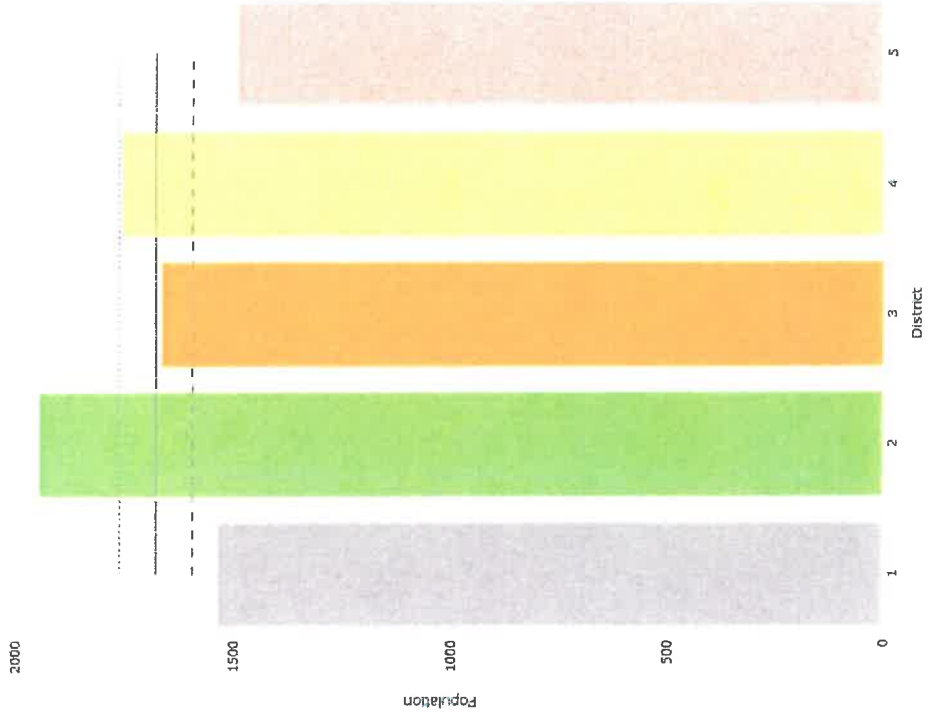
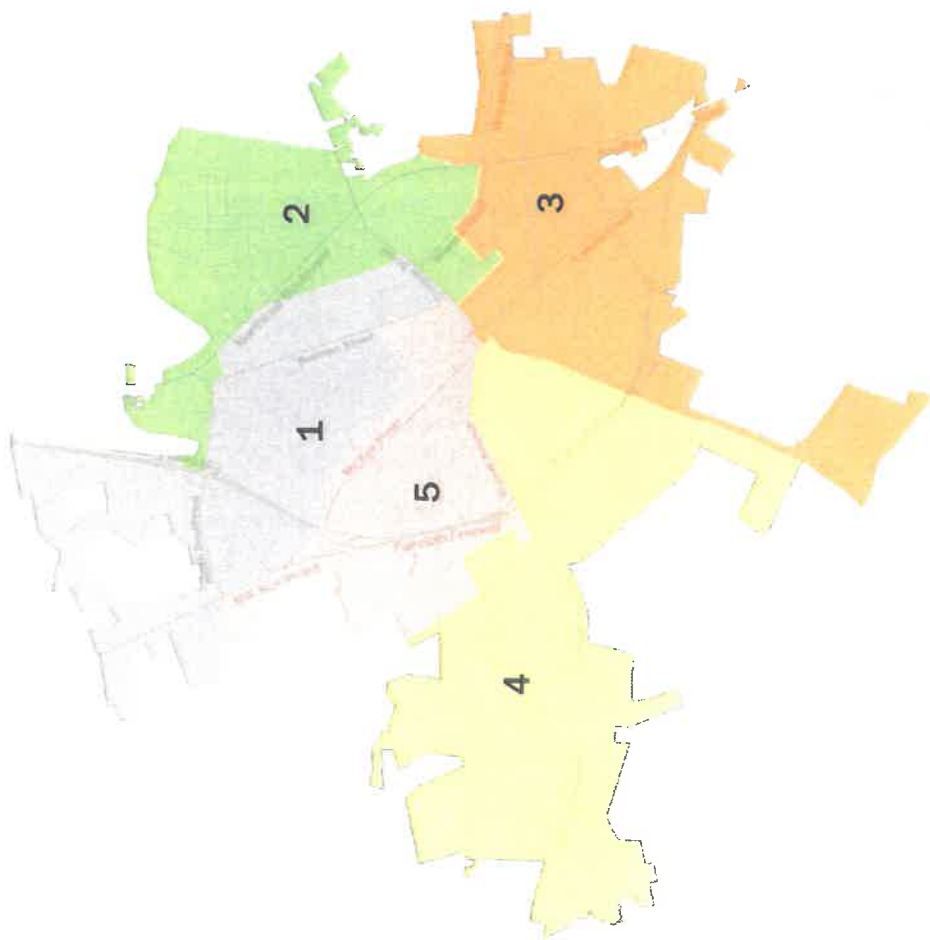
2010 population: 8,639

2020 population: 8,383

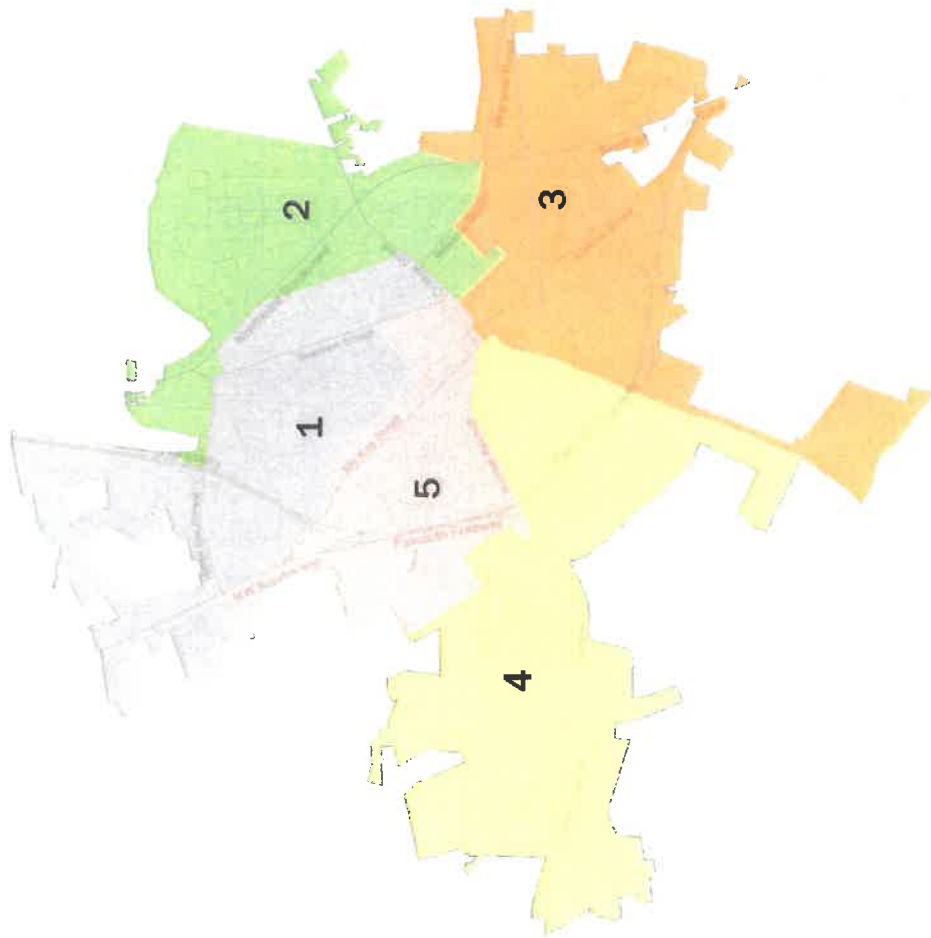
Ideal district population: 1,677

Permissible range: 1,594 – 1,761

Existing Districts*

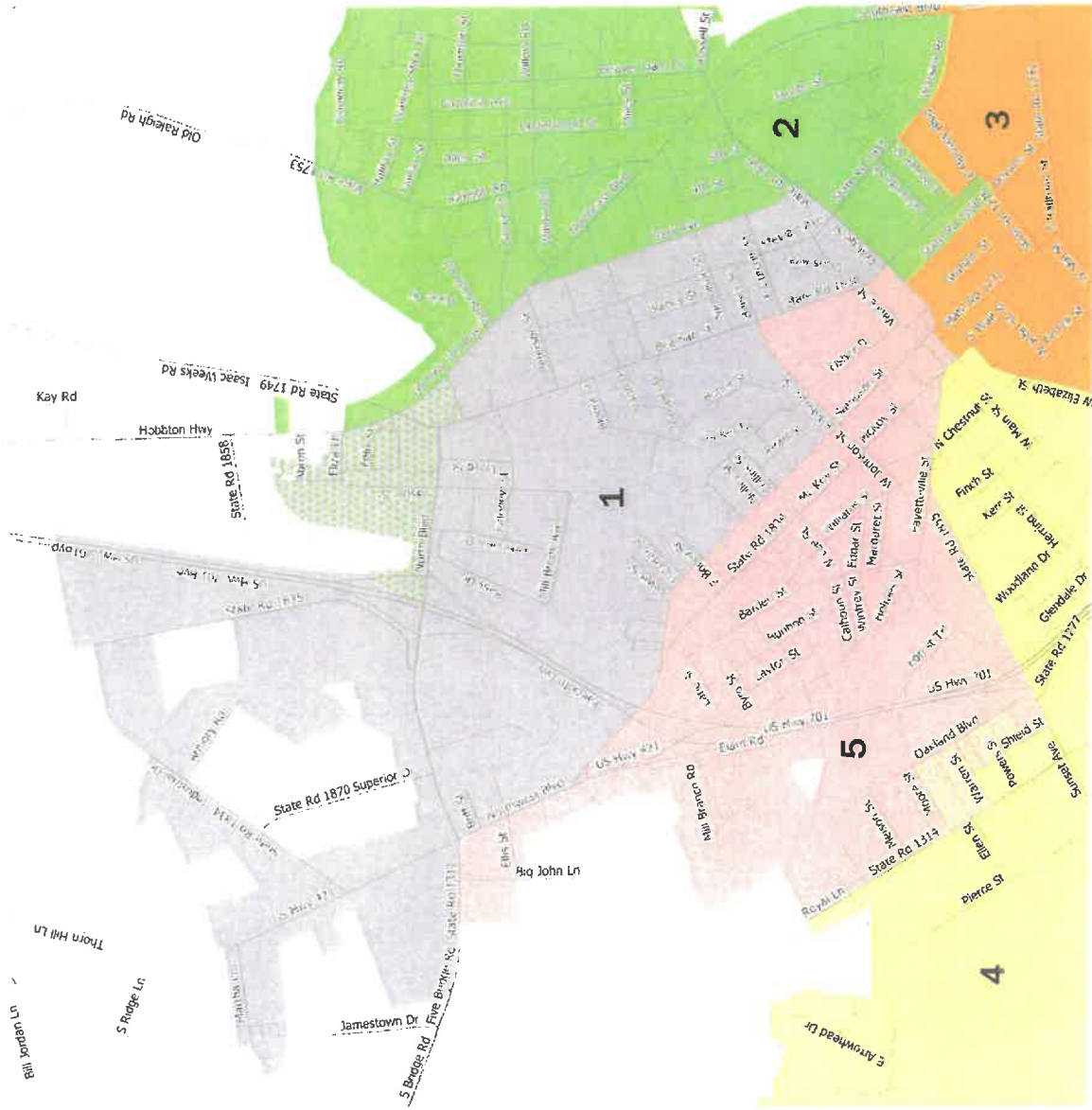


Existing Districts*



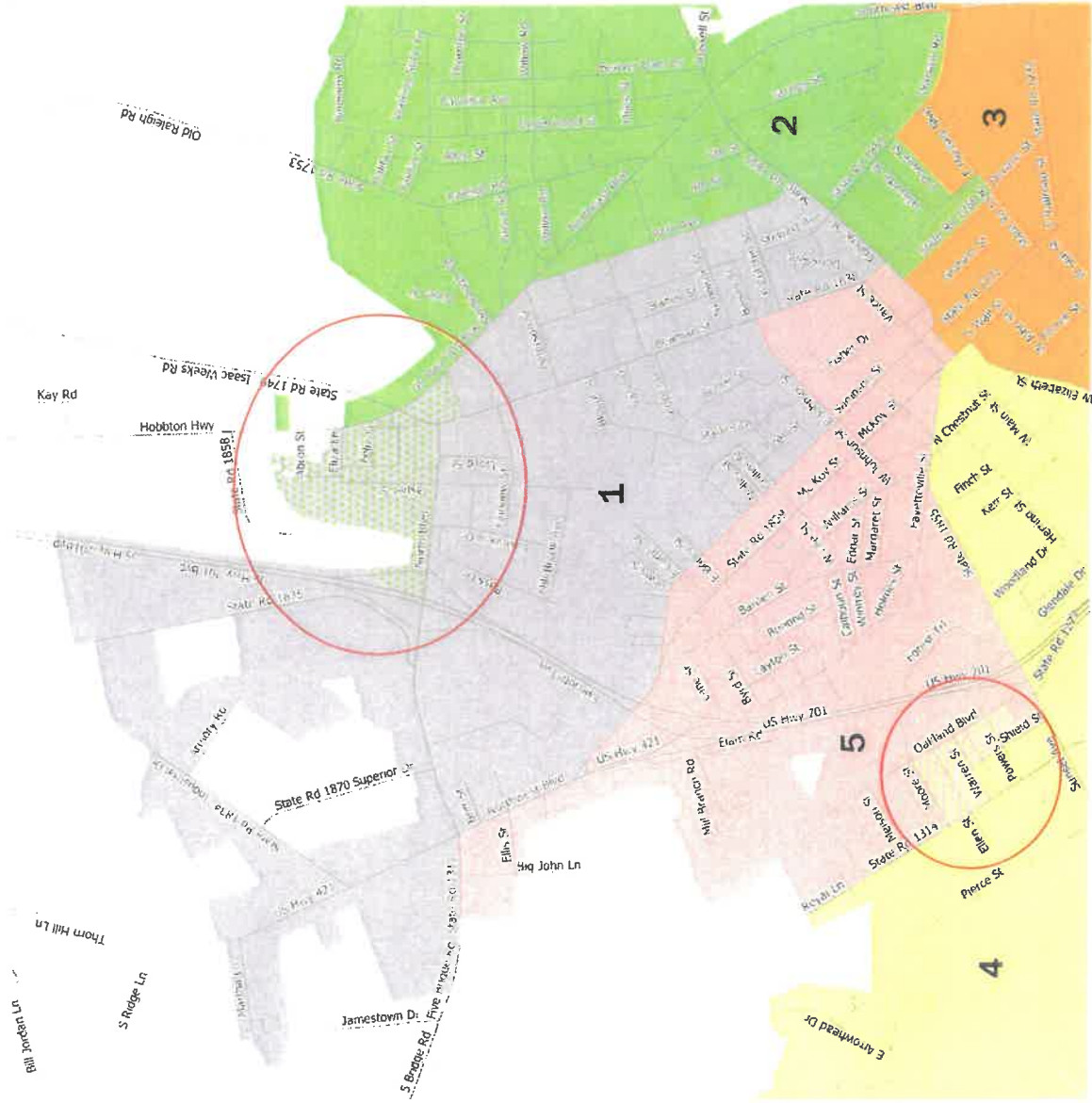
Changes in Option A

- Solid background color represents proposed district
- Dots' color represents existing ("old") district
- If no dots visible, the area is unchanged

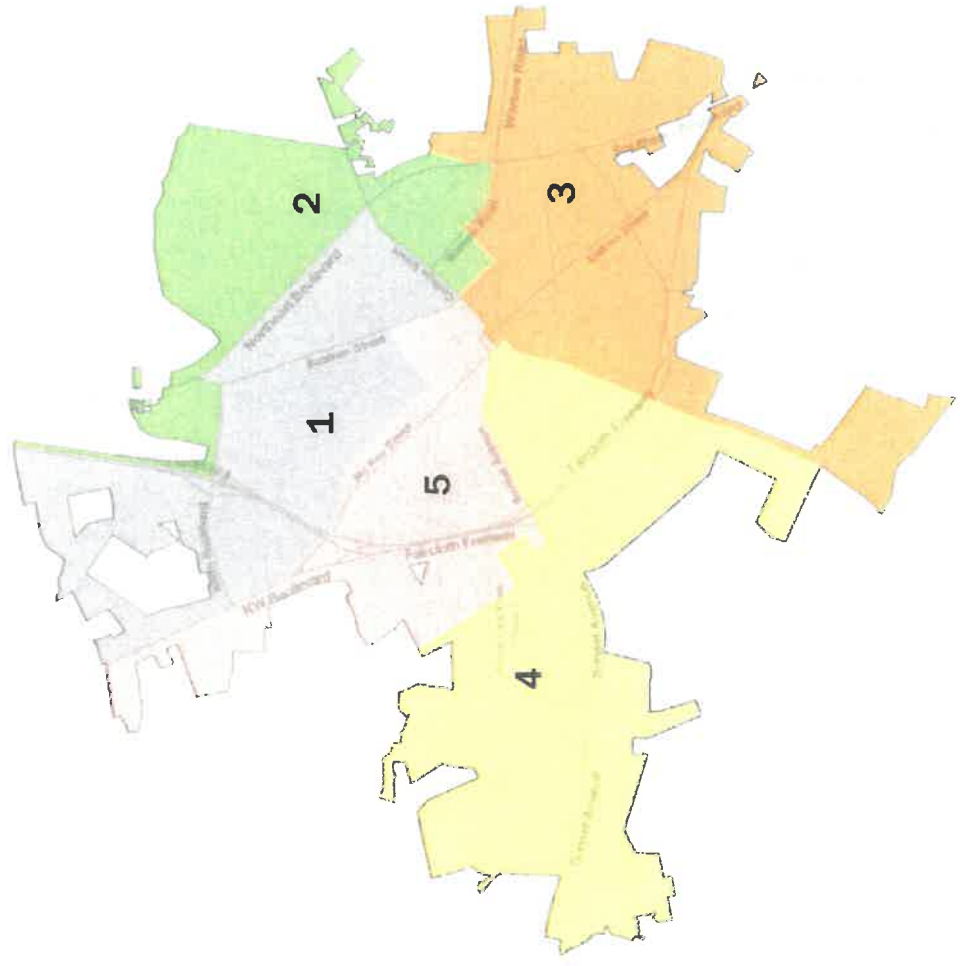


Changes in Option A

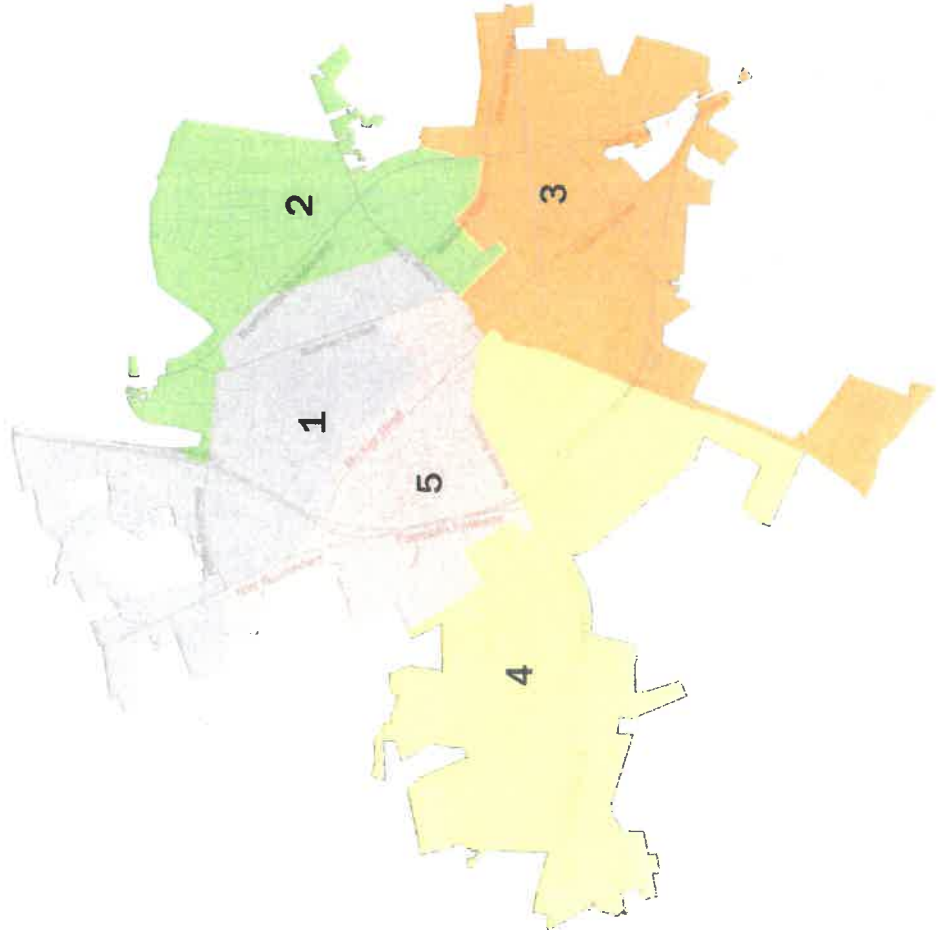
- Solid background color represents proposed district
- Dots' color represents existing ("old") district
- If no dots visible, the area is unchanged



Option B

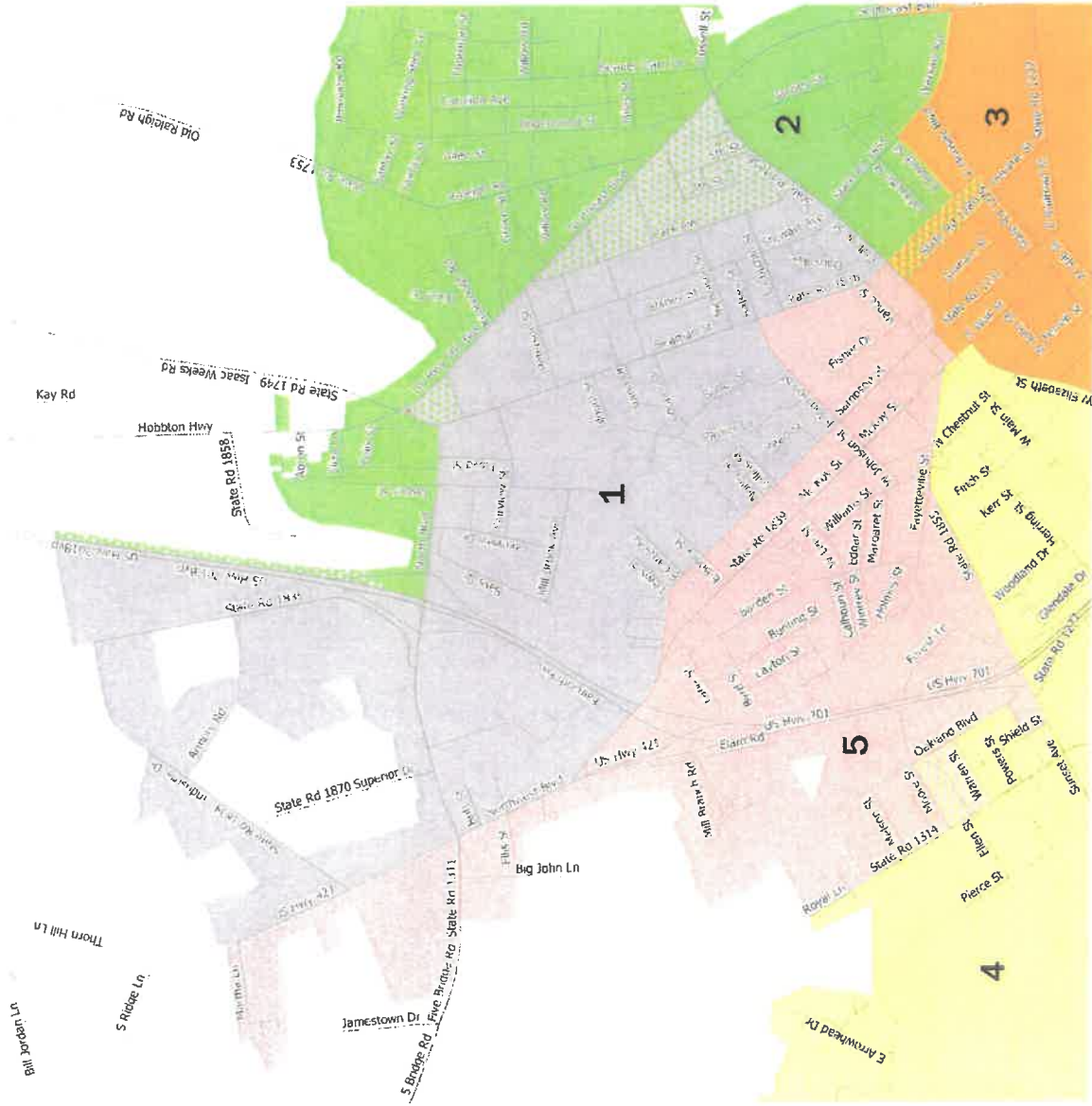


Existing Districts*



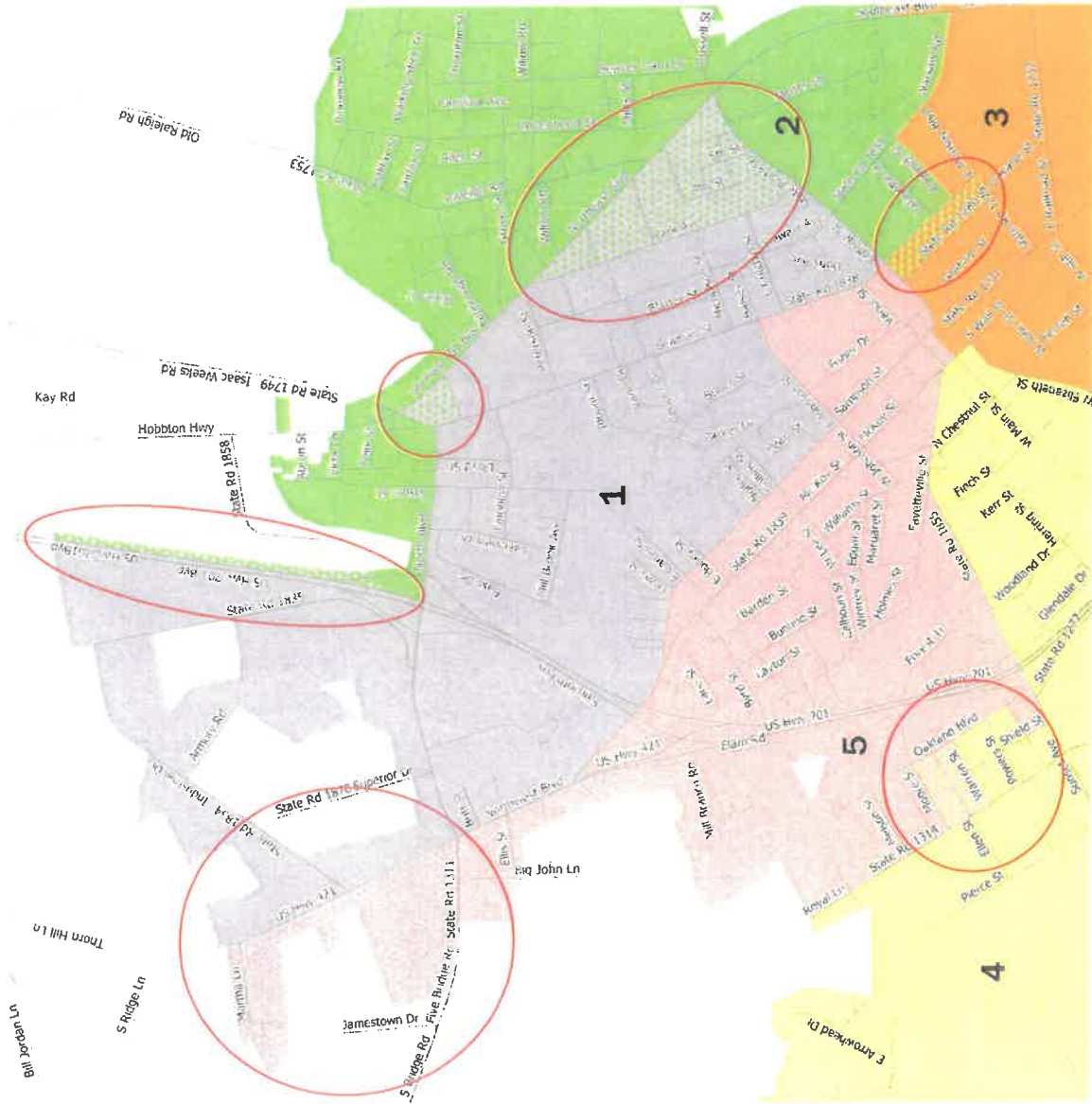
Changes in Option B

- Solid background color represents proposed district
- Dots' color represents existing ("old") district
- If no dots visible, the area is unchanged



Changes in Option B

- Solid background color represents proposed district
- Dots' color represents existing ("old") district
- If no dots visible, the area is unchanged



Draft Plan	District	Population	Population Deviation	Percent Deviation	Total Population									
					% White	% Black or African American	% American Indian or Alaska Native	% Asian	% Native Hawaiian or Pacific Islander	% Other Race	% Multi-racial	% Hispanic or Latino		
EXISTING*	1	1,535	-142	-8.47%	47.82%	32.96%	2.02%	1.11%	0.07%	11.40%	4.63%	16.94%		
	2	1,943	266	15.86%	54.25%	28.87%	0.72%	1.34%	0.10%	8.90%	5.82%	14.87%		
	3	1,662	-15	-0.89%	27.98%	50.66%	1.14%	1.50%	0.12%	10.41%	8.18%	16.67%		
	4	1,750	73	4.35%	62.63%	25.43%	1.89%	0.86%	0.06%	4.74%	4.40%	9.37%		
	5	1,493	-184	-10.97%	15.74%	68.59%	1.74%	1.00%	0.13%	7.17%	5.63%	14.20%		
OPTION A	1	1,737	60	3.58%	46.40%	33.85%	1.96%	1.27%	0.12%	11.69%	4.72%	17.21%		
	2	1,741	64	3.82%	56.40%	27.51%	0.63%	1.21%	0.06%	8.33%	5.86%	14.36%		
	3	1,662	-15	-0.89%	27.98%	50.66%	1.14%	1.50%	0.12%	10.41%	8.18%	16.67%		
	4	1,630	-47	-2.80%	64.72%	24.29%	1.78%	0.92%	0.06%	3.74%	4.48%	8.10%		
	5	1,613	-64	-3.82%	17.11%	66.52%	1.86%	0.93%	0.12%	8.00%	5.46%	15.13%		
OPTION B	1	1,660	-17	-1.01%	49.10%	30.60%	2.23%	0.96%	0.12%	11.99%	5.00%	18.80%		
	2	1,719	42	2.50%	55.21%	29.61%	0.47%	1.51%	0.06%	7.45%	5.70%	12.27%		
	3	1,719	42	2.50%	27.57%	50.49%	1.11%	1.45%	0.12%	11.29%	7.97%	17.57%		
	4	1,683	6	0.36%	63.76%	24.96%	1.78%	0.89%	0.06%	4.04%	4.52%	8.44%		
	5	1,602	-75	-4.47%	17.04%	66.98%	1.81%	1.00%	0.12%	7.62%	5.43%	14.67%		

*Statistics should be considered approximate due to split census block ambiguities.

City of Clinton Redistricting Timeline

